



➤ Led Lens



Variable Traffic Signs are used widely for ITS applications and they often used on highways to give travelers information about dynamic situation of the road, like weather information, current speed limit, lane control information. They are usually smaller size according to the VMS and used especially on the critical part of the road network like tunnel entrance, construction zones, meteorologically critical locations, toll collection areas and etc.

Kuantumek Technology offer special design according to customer needs and meet the criteria of the potential situation of the road. Variable traffic signs can be with predefined pictograms or full matrix type. Kuantumek Technology system continuously monitor the current situation of the road network like weather conditions, traffic speed and changes the information on the sign automatically without any operator support. Our Variable Traffic Signs also have the plug and play option for most type of traffic situation measurement devices.

Material: Acrylic; Weight: 250mg; Length: 2cm

Key Benefits

- Compliance with EN12966
- Custom Matrix design
- Single LENS technology
- Frontal maintenance option
- Low Power Consumption
- Wide variety of communication options
- Compatible with TCP/IP, NTCIP, PROFIBUS, MODBUS protocols
- Intelligent Fault Detection
- Special Frontal Design to avoid the reflection
- Plug & Play option f Multi point support Power Supply Design (Each Power Supplies are spares for each others)
- Single Point Continuous Control
- Easy Maintenance and Installation

<http://www.kuantumek.com>

T. +90 312 4840368

E-mail. info@kuantumek.com

Latin America and Brazil Representative

Mr. Vedat MUTLU

T. [+55 63 98149-2724](tel:+5563981492724) | [+55 63 99202-6263](tel:+5563992026263)

E-mail. vedatmutlu64@gmail.com



KUANTUMEK TECHNOLOGY®

Applications

- Bridge
- Building
- Entertainment Center
- Club
- Streets
- Message Boards
- Traffic Signs

Lane Control Signs: Lane control signs are one of the mostly used variable traffic signs and used at the entrance and inside the tunnels and forward drivers to the individual lanes according to the current situation of the each lane in the tunnel. Kuantumek Technology's standard lane control sign comes with 4 aspect of right arrow, left arrow, down arrow, and cross sing with different and customized size options. Speed Control Signs: Speed control signs are also mostly used at the entrance and inside the tunnels and show the drivers the current speed limit of the road or the tunnel according to the current situation of the traffic flow. Kuantumek Technology's standard speed control sign comes with 4 aspects of 50, 70, 90 and exclamation sign.



Monitor



LED



Lens

<http://www.kuantumek.com>

T. +90 312 4840368

E-mail. info@kuantumek.com

Latin America and Brazil Representative

Mr. Vedat MUTLU

T. [+55 63 98149-2724](tel:+5563981492724) | [+55 63 99202-6263](tel:+5563992026263)

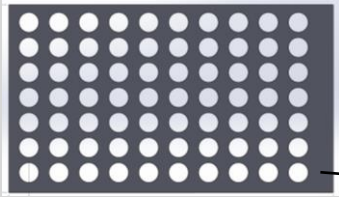
E-mail. vedatmutlu64@gmail.com



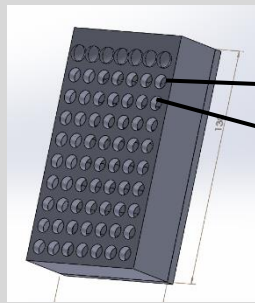
KUANTUMEK TECHNOLOGY®

INSTALLATION GUIDE

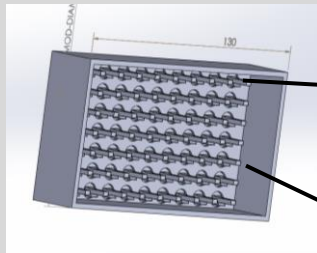
1.) Attached to the Lenses on the Monitoring Systems.



Monitor Front Plane



Lens Holder

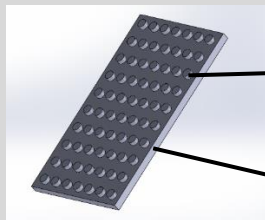


Monitor



Figure1

1.) Attached to the Leds on the bottom plate



(Before Lighting)

<http://www.kuantumek.com>

T. +90 312 4840368

E-mail. info@kuantumek.com

Latin America and Brazil Representative

Mr. Vedat MUTLU

T. [+55 63 98149-2724](tel:+5563981492724) | [+55 63 99202-6263](tel:+5563992026263)

E-mail. vedatmutlu64@gmail.com



KUANTUMEK TECHNOLOGY®

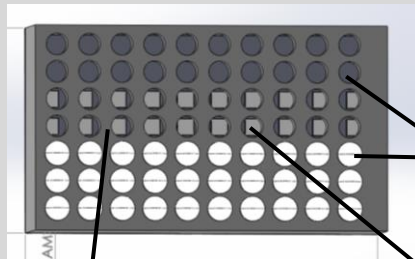
Bottom plate



(After Lighting)

Figure2

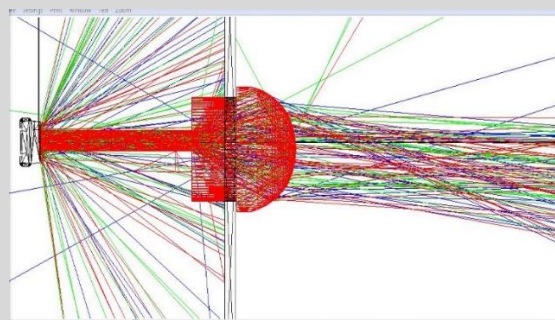
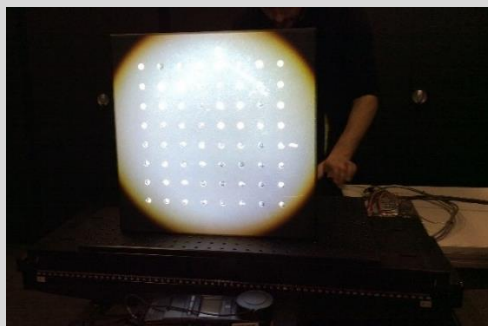
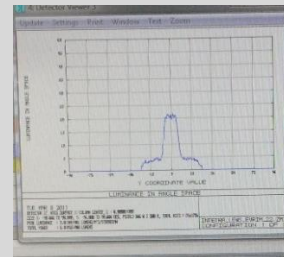
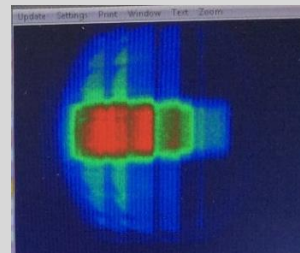
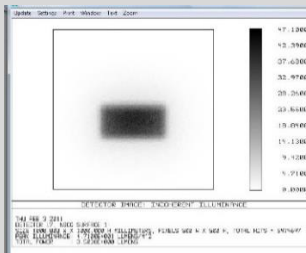
2.) Figure1 and Figure2 are joined together.



Monitor

LED

Lens Holder



Integrating Led Lens Systems

<http://www.kuantumek.com>

T. +90 312 4840368

E-mail. info@kuantumek.com

Latin America and Brazil Representative

Mr. Vedat MUTLU

T. [+55 63 98149-2724](tel:+5563981492724) | [+55 63 99202-6263](tel:+5563992026263)

E-mail. vedatmutlu64@gmail.com



KUANTUMEK TECHNOLOGY®

- Lens prevents sunlight from coming into the system. So prevents the Led's warm-up and, consequently, the lifetime of the Led and Electronic circuits (Life time two times longer).
- The optical performance of the lens depends on the quality of the LED.
- The lens is wrapped late.
- Lighting is provided 15 degree horizontal and 10 degree vertical axial.
- The Led Lens Systems are not brightness by reflection of the sun.

Optical Performance:

200 x (Led + LENS) = 1000 Led

Energy:

Led (1.5 W / 100 Lm) + LENS = 50 x Led (1.5 W / 100 Lm)

Cost Efficiency:

800 Led less to be used, 200 LENS more to be used. At the same time, the life time of the LEDs and Electronic circuit used will be longer. If the price of the lens is about the same as the LED price, it will be paid as low as the price of 600 LEDs.

Especially LEDs for Nichia, Rebel, Osram, Hp trademarks; LENSES show high performance. As you can see the figure1 and figure2, Using only the LEDs, the distance of the light is lower as shown Figure1. If using with LENSES (LED + LENSES), the distance of the light is high performance quality more and homogenous light distribution is also provided angularly as shown Figure2.



Figure1: Using LED



Figure2: Using LED + LENS

International Patents and Trademark

<http://www.kuantumek.com>

T. +90 312 4840368

E-mail. info@kuantumek.com

Latin America and Brazil Representative

Mr. Vedat MUTLU

T. [+55 63 98149-2724](tel:+5563981492724) | [+55 63 99202-6263](tel:+5563992026263)

E-mail. vedatmutlu64@gmail.com



KUANTUMEK TECHNOLOGY®

Guarantees

Led Lenses have 10 years guarantees.

[Led Lens Video1](#)

[Led Lens Video2](#)

[Led Lens Video3](#)

[Led Lens Installition Video1](#)

[Led Lens Installition Video2](#)

<http://www.kuantumek.com>

T. +90 312 4840368

E-mail. info@kuantumek.com

Latin America and Brazil Representative

Mr. Vedat MUTLU

T. [+55 63 98149-2724](tel:+5563981492724) | [+55 63 99202-6263](tel:+5563992026263)

E-mail. vedatmutlu64@gmail.com